

DUSITPRINCESS

CHIANG MAI

DUSITPRINCESS

CHIANG MAI

WELCOMING • EFFICIENT • AFFORDABLE

112 Chang Klan Road, Amphur Muang, Chiang Mai 50100, Thailand
Tel: +66 (0) 5325 3900 Fax: +66 (0) 5328 1044 Email: dpcm@dusit.com

www.Dusit.com





DusitPrincess Chiang Mai is located in the heart of Chiang Mai, providing a gateway to the city's famous Night Bazaar, the region's stunning scenery and the centre of traditional Thai arts and crafts production and Facilities.

This hotel in Chiang Mai is a haven of warm personal service and Thai hospitality, and its charming guest rooms and suites feature traditional Thai-inspired decor and design complemented by modern amenities

With a restaurant and bar, a swimming pool and a tropical garden terrace with a poolside bar, DusitPrincess Chiang Mai affords guests the option to kick back and relax.



Accommodation

With 198 well-appointed guest rooms and suites, DusitPrincess Chiang Mai offers accommodation options to fit all types of travellers. Each room and suite features contemporary, Thai-influenced interiors and large windows that allow for ample natural light.

198 hotel rooms and suites.

- 36 Superior Rooms 26 sq m
- 114 Deluxe Rooms 32 sq m
- 32 Executive Plus 32 sq m
- 8 Junior Suites 46 sq m
- 6 One-bedroom Suites 60 sq m
- 2 Two-bedroom Suites 100 sq m

All Accommodation offers:

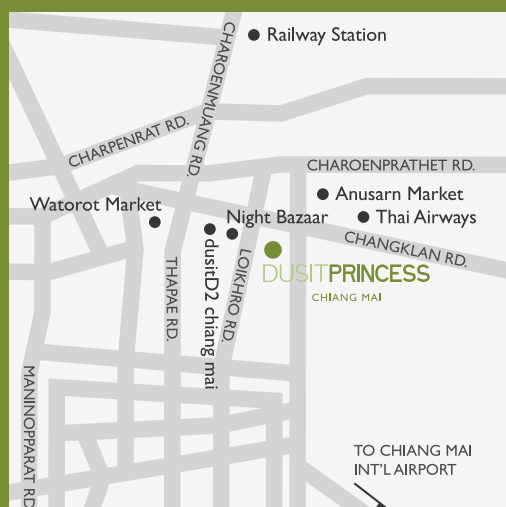
- Complimentary wireless internet access
- Coffee and tea making facilities
- Flat-screen LCD television
- Complete room amenities set up (Hair dryer, toiletries, bathrobe etc.)
- In-room safe
- Connecting rooms available upon request

Services & Facilities

- Wireless internet access throughout guest rooms / Public Area
- Outdoor swimming pool
- In Room dining from 11:00 to 23:00
- Airport Transfer / Shuttle
- Car park
- Tour Counter
- Laundry / Dry Cleaning Services
- Currency Exchange

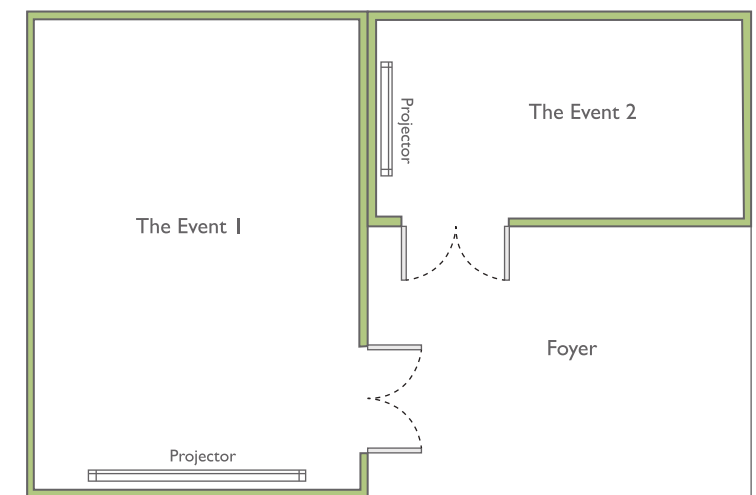
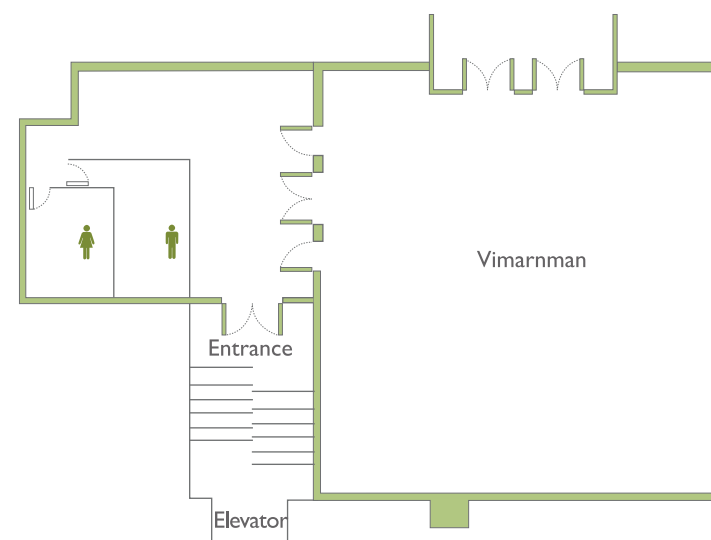
Food & Beverages

- Jasmine Restaurant
- Dusit Groumet



Meetings & Events

- Vimarnman
- Event 1 & 2



Function Room Capacities and Dimensions

| Venue | Floor Area sq m | Capacities | | | | |
|---------------|--------------------|------------|----------|---------|---------|-----------|
| | | Banquet | Cocktail | Theater | U-Shape | Classroom |
| 1 Vimarnman | 196 | 70 | 100 | 100 | 40 | 50 |
| 2 The Event 1 | 51 | - | - | 56 | 20 | 30 |
| 3 The Event 2 | 28 | - | - | 20 | 10 | 15 |

