

Dusit Thani Kyoto  
www.dusit.com

466 Nishinotoin-cho,  
Nishinotoin-dori Shomen agaru,  
Shimogyo-ku, Kyoto 600-8372 Japan

info.dtkj@dusit.com  
+81 (0) 75-343-7150

# Welcome to Dusit *Thani* Kyoto



Dusit Thani  
KYOTO

Immerse yourself in the harmonious blend of gracious Thai hospitality and the subtlety of Japanese tradition for a unique and remarkable experience. From the luxurious guest rooms and suites to the welcoming lobby lounge and the peaceful and immaculate courtyard, each space is carefully designed to welcome you in elegant surroundings while simultaneously making you feel at home.

Discover ancient Thai therapeutic arts interwoven with holistic Japanese rituals, offering a heightened sense of serenity at Devarana Wellness, and savour the epitome of culinary traditions at our unique concept restaurants.



## Accommodation

### 147 Hotel Rooms

• 22 Deluxe Rooms	40 sq m
• 98 Premier Room	40 sq m
• 13 Premier Garden View	40 sq m
• 7 One Bedroom Suite	80.5 sq m
• 4 One Bedroom Corner Suite	88 sq m
• 2 Premier Suite	108 sq m
• 1 Imperial Suite	173 sq m

## Property Highlights

### Architectural Fusion:

Japanese Delicacy meets Thai Elegance

### Sensory Feast:

Authentic Thai Cuisine

### Seasonal Palette:

Chef's Table Celebrating Japan's Seasons

### Refined Respite:

Elegant Offerings and Afternoon Tea Indulgence

### Wellness Harmony:

Tranquil Retreats at Devarana Wellness

### Cultural Exploration:

Maiko Dance and More Traditional Activities

## Dining and Entertainment

### Ayatana (Thai Fine Dining Restaurant)

A realm curated by the visionary award-winning chefs Bo Songvisava and Dylan Jones from Bo.lan, Ayatana invites you to partake in mindful and authentic experiences that honour tradition and local producers.

### Kōyō 紅葉 (Seasonal Teppan Chef's Table)

Embark on a culinary journey like no other at Kōyō, an exclusive and interactive Chef's Table that embodies the essence of its name, meaning "changing of season" in Japanese.

### The Gallery (Lobby Lounge)

our signature afternoon tea experience is a haven of tranquility and sophistication, inviting guests on a captivating journey through exquisite flavours.

### Tea Salon

An oasis of tranquility, where ancient traditions merge with wellness. Guided by a Kyoto-born tea master, every moment is a captivating journey into Japanese culture and inner harmony. Adorned with beautiful tatami mats, the intimate setting radiates elegant simplicity

### Den Kyoto (Funky Craft Spirit Bar)

At Den Kyoto, a lively bar awaits night owls with pulsating beats, offering an exquisite selection of bespoke cocktails and rare spirits, perfectly paired with tantalizing bites for a culinary adventure.

### Kati (Thai Dessert Atelier)

Welcome to Kati, a Thai dessert atelier where artistry shines. Our dessert artisans craft Thai sweets inspired by traditional recipes, using the finest ingredients and local produce from award-winning chefs Bo Songvisava and Dylan Jones of Bo.lan.

### In-Room Dining

Indulge in the convenience of in-room dining. Enjoy a delectable meal in the comfort of your room with our diverse menu options, available breakfast until dinner.

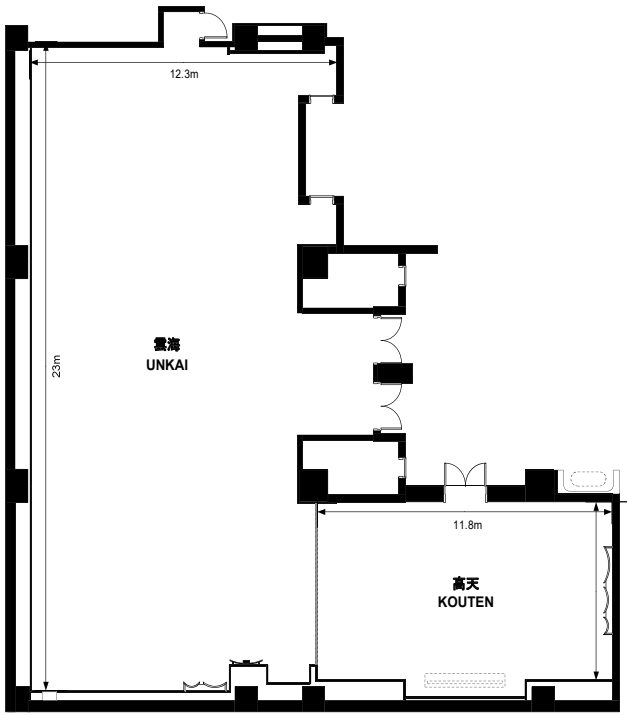
### Devarana Wellness

An Urban Wellness Sanctuary, Devarana Wellness is a holistic and nurturing environment to surrender the mind. Providing Solace and Solitude, offering Holistic Thai Healing therapies alongside traditional Japanese rituals which form the basis of targeting your recovery and recuperation.

## Guest Services and Facilities

- Airport Transfer
- Car Parking and Valet Service
- Concierge Services
- Rental Bicycle
- Dusit Shop
- Devarana Wellness Center Spa, Fitness, Hydrothermal Facilities & Pool, Retail Shop
- Daily Housekeeping Service
- Turn Down Service
- Free Wifi





Dusit Thani Kyoto has two function rooms for all kinds of occasions and events. From business to casual parties, we are preparing hospitality in a sophisticated and luxurious space that fuses tradition and modernity.

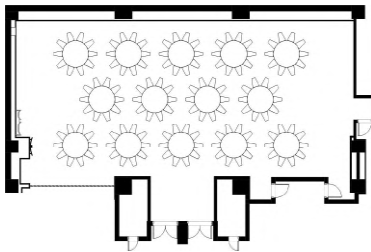
**UNKAI 雲海** is a 250-sq. m venue with capacity for up to 112 guests.

**KOUTEN 高天** is a 75-sq. m venue with capacity for up to 32 guests.  
Location: B1 (Garden Level)

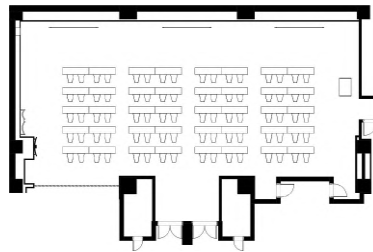
### Function Room Capacity and Dimensions

Venue	Floor Area		Ceiling Height			Banquet/Event			Meeting/Conversation		
	Sq m	ft <sup>2</sup>	Depth	Weight	Height	Banquet	Cocktail	Buffet	U-Shape	Classroom	Theatre
UNKAI 雲海	250	2,691	12.3m	23m	4.8m	126	150	100	66	144	224
KOUTEN 高天	75	807	6.7m	11.8m	3m	36	50	30	30	36	56

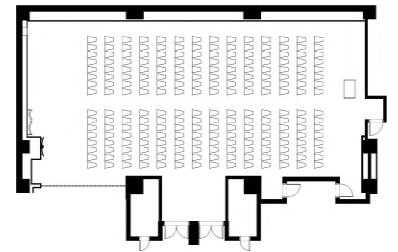
### UNKAI 雲海



Banquet  
140 persons

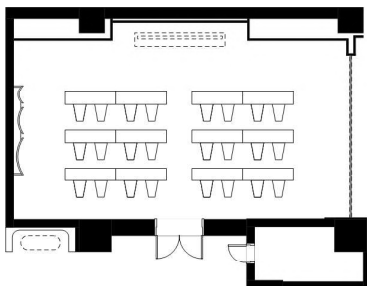


Conference & Classroom  
80 persons

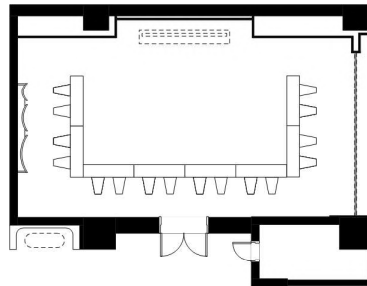


Conference (Theater)  
224 persons

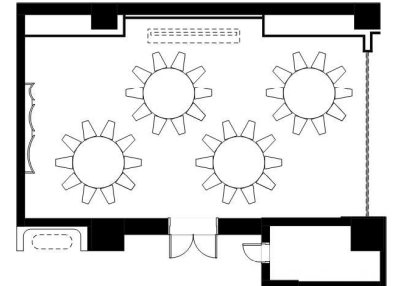
### KOUTEN 高天



Meeting (Classroom)  
24 persons



Meeting (U-Shape)  
16 persons



Banquet  
40 persons

Dusit Thani is a place  
for peace, extravagance  
and relaxation. Located in  
vibrant cities and tranquil  
destinations around the world.  
Everything you deserve.